

*Deliver and Demonstrate Impact  
of your PE Practice*



**AMAVEN**  
Measure • Track • Improve

# Deliver positive outcomes and demonstrate IMPACT

Schools struggle to produce evidence of the outcomes delivered by their PE practice and are therefore unable to easily produce an impact report for the sport premium funding. The government announced that the PE and sport premium funding for primary schools will be doubled from £160 million per year to £320 million per year from September 2017, making the need to produce clear evidence and reporting of PE and sports impact even more stringent.

At Amaven we recognise these issues and we have developed a simple online solution to help teachers to deliver positive outcomes for each pupil but also to help them to measure, report and improve the fundamental movements skills, fitness and sports skills of each pupil. The programme supports the needs of every pupil, is inclusive of their age and ability and exceeds the needs of the curriculum.

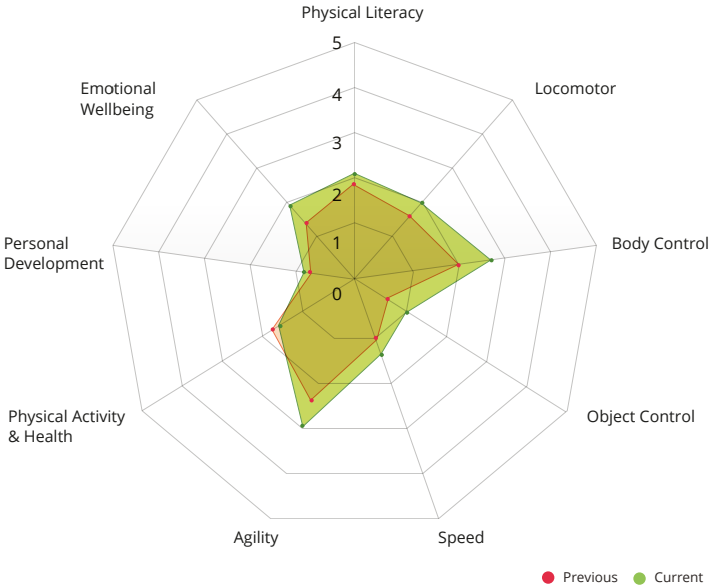


✓ **We all want our children to be healthy, active and enjoy participating in sport**

**Amaven will help you and your pupils to achieve all this and much more:**

- |                                    |   |
|------------------------------------|---|
| ✓ Physical and emotional wellbeing | ✓ Confidence  |
| ✓ Healthy active lifestyles        | ✓ Competitiveness                                       |
| ✓ Commitment and desire to improve | ✓ Teamwork independent learners & effective leaders     |
| ✓ Participation in sport           | ✓ Engagement with parents                               |
| ✓ Self-esteem and belief           | ✓ Demonstrate the impact of PE to parents and governors |

# Impact report

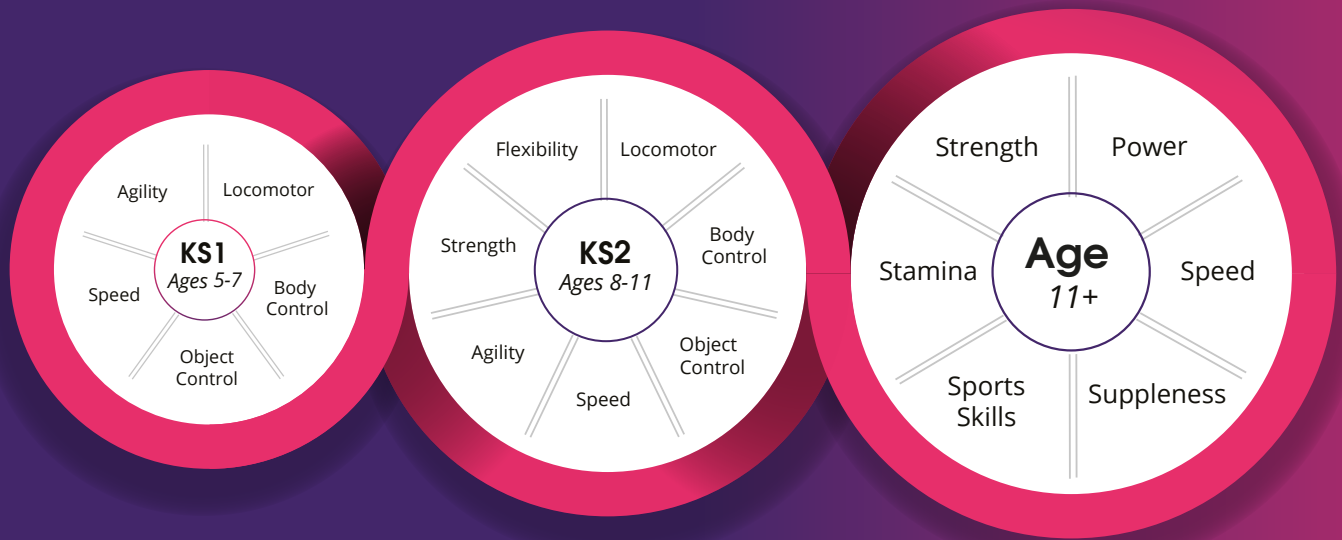


Metric	Current	Previous	Change
Locomotor	2.00	1.76	14 % ↑
Body Control	2.53	2.00	26 % ↑
Object Control	1.00	0.76	24 % ↑
Speed	1.23	1.05	18 % ↑
Agility	3.00	2.50	20 % ↑
Physical Activity & Health	1.80	1.92	7 % ↓
Personal Development	0.95	0.75	26 % ↑
Emotional Wellbeing	1.96	1.53	28 % ↑

# Designed for specialist and non-specialist teachers

The Amaven system is specifically designed for specialist and non-specialist PE teachers to improve the outcomes they deliver without increasing their workload; our aim is to reduce it.

Simple assessments completed in one lesson per term will capture the data necessary to produce impact reports for each pupil, a class and the whole school. Amaven assessments are both subjective and objective ensuring that each child's needs are considered and they are supported at their individual level.

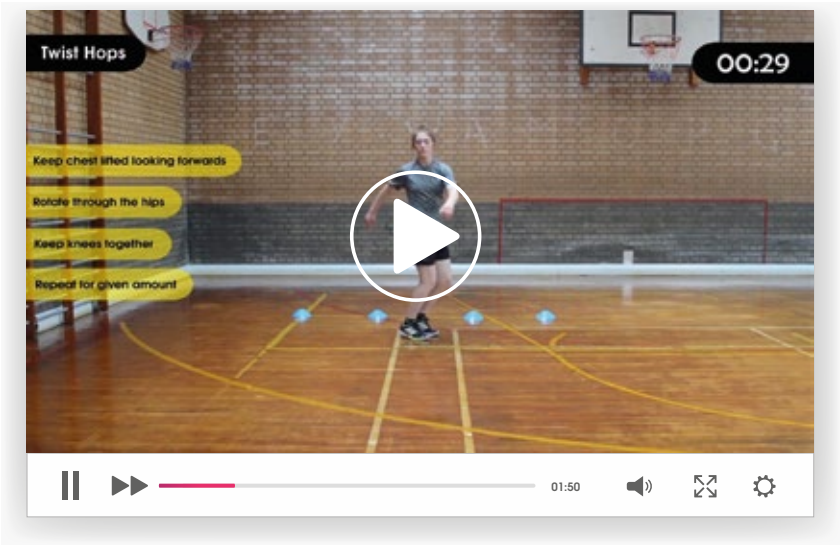


Class based scores help teachers to identify the needs of the pupils and select the appropriate PE lesson plan for their PE lessons. Amaven uses individual scores to automatically deliver appropriate home learning sessions through video instruction. These sessions embed the Fundamental Movement Skills and improve general conditioning.

# Home Learning plans

During PE lessons, teachers have a limited opportunity to create the desired impact in every pupil. Consequently, many children are failing to reach their full physical potential. Children are also adopting sedentary lifestyles due to the limited opportunity to practice skills and play sport. Research demonstrates that every player matures at a different rate and therefore the player's fitness and skills programme needs to meet their individual needs to optimise their development.

Every pupil receives a personalised development pathway with video-based home training sessions. These sessions are appropriate to the pupil's ability focusing on their athletic conditioning to develop ABC's (agility, balance and co-ordination) through the mastery of the FMS (fundamental movement skills).



## Acquiring Agility, Balance and Co-ordination through the Fundamental Movement Skills

### Locomotor

- ✓ Crawling
- ✓ Running
- ✓ Galloping
- ✓ Walking
- ✓ Hopping
- ✓ Dodging
- ✓ Leaping
- ✓ Jumping (height)
- ✓ Jumping (distance)
- ✓ Skipping

### Body Control

- ✓ Landing
- ✓ Stretching
- ✓ Climbing
- ✓ Balancing
- ✓ Turning
- ✓ Rolling
- ✓ Stopping
- ✓ Bending
- ✓ Twisting
- ✓ Swinging

### Object Control

- ✓ Throwing
- ✓ Catching
- ✓ Striking
- ✓ Bouncing
- ✓ Kicking
- ✓ Rolling
- ✓ Heading
- ✓ Dribbling

# Key Features of Amaven System



## **CPD for teachers**

Amaven helps staff to develop the knowledge and skills for them to deliver a high-quality PE curriculum with confidence. We cover Physical Development and PE CPD for FS/KS1 and KS1/KS2.



## **Impact Reporting Through Simple Assessments**

To demonstrate IMPACT the need to assess progress becomes even more important. Simple assessments carried out in one lesson per term allow you to produce IMPACT reports for every pupil. Teachers can choose from a library of objective and subjective assessments to measure and track Improvement.



## **Lesson Plans**

Amaven provides a comprehensive library of lesson plans with videos and coaching points to help teachers deliver high-quality lessons. The system recommends lesson plans based on the aggregated class scores. Lesson plans include both the fundamental movement skills and sport specific drills. Lesson plans have differentiation built in for high and low achievers as well as disabled pupils.



## **Lifestyle Management**

We support both pupils and parents with regular lifestyle advice and learning created by Amaven's experts. We cover subjects such as nutrition, fitness, sleep and emotional wellbeing delivered regularly via emails, blogs and push notifications.



## **Personalised Home Training Plans**

Amaven provides each pupil with personalised workout videos to practice movement skills and improve their fitness at home. Each workout has coaching points and instructions for pupils to help them train optimally. These workouts become more challenging as the pupil progresses.

Parents are also provided with a login to support and help their child at home. We encourage pupils to practice at home with their parents and friends. Pupils and parents can mark the home training sessions as complete and provide an enjoyment rating.

# What our customers are saying about Amaven

“ *Severn View Academy loves Amaven! We are pleased with the system and are happy that Amaven are listening to our suggestions to improve it further. Chesterton is getting to grips with the programme and have enjoyed the trial. The governors were most impressed with the data it has produced so far. I have recommended that the School Business Manager purchases it for the school.*

**Claire Wirth – Principal**

Severn View Academy, Stroud, UK

*Every head teacher should look at this ...Amaven is easy to use and compliments what we are trying to achieve in school through our PE strategy. It really helps my teachers and does not cause them more work.*

**Ed Byrne – Head Teacher**

St Gabriel's, Alsager, UK

*Since using the Amaven package, the quality of PE teaching amongst our non-specialist teachers has improved dramatically. With tailored lesson plans that link to the needs of the children, teachers are becoming increasingly confident in their delivery. They feel it has given them a better insight into the physical literacy of their children.*

**Claire Morgan - Sports Co-Ordinator**

Weaver Primary School, Cheshire, UK

*With the pressures Sport England will be putting on me to deliver their latest strategy: Towards An Active Nation, this software takes away all of the headaches and ticks all the boxes.*

**Jake Gibbons – PE teacher**

Four Primary Schools in Cheshire, UK

*We found the home training challenging and enjoyable.*

**A parent in Cheshire**



## Data Protection and Security

We know data protection is of vital importance to the school and parents. We comply with the UK Data Protection Act 1998 and are fully committed to safeguard personal data relating to the pupils and parents in your school. Our login management system enables the school to manage access levels for teachers, parents and pupils.



**"Children are designed to move; we have the responsibility to give them every opportunity to enjoy playing sport and lead a healthy lifestyle."**

PK Vaish is a co-founder of Amaven



Twitter: @myamaven

Facebook: <https://www.facebook.com/myamaven>

Linkedin: <https://www.linkedin.com/company/amaven>

Phone: 0161 300 9172

Fax: 0161 820 7959

Email: [info@amaven.co.uk](mailto:info@amaven.co.uk)

---

Amaven Limited 5th Floor, 51 Lever St Manchester, M11FN United Kingdom

[www.amaven.co.uk/education](http://www.amaven.co.uk/education)