

# MAXIMISING THE IMPACT OF THE PUPIL PREMIUM



Education  
Endowment  
Foundation

**STARTING IN  
TRURO  
CORNWALL  
JANUARY  
2019**

Develop, implement and sustain  
an evidence-based high impact  
Pupil Premium strategy  
for your school.





# MAXIMISING THE IMPACT OF THE PUPIL PREMIUM

IN ASSOCIATION WITH CORNWALL TEACHING SCHOOLS & THE EDUCATION ENDOWMENT FOUNDATION'S RESEARCH SCHOOL NETWORK



## The Programme

### DAY ONE 14th January 2019

The principles of effective Pupil Premium use, the evidence-informed school improvement cycle and evaluation of current practice.

### DAY TWO 28th February 2019

Setting clear outcome measures based on pupil need, monitoring provision and creating an implementation plan.

### DAY THREE 1st April 2019

Review, support and ongoing planning for effective Pupil Premium Teaching & Learning.

## Programme Places

£295 per person

£395 per team of two

RESERVE YOUR PLACE NOW

[www.tiny.cc/cornwallpupilpremium](http://www.tiny.cc/cornwallpupilpremium)

EMAIL FOR MORE INFORMATION

[victoria.flower@kingsbridgecollege.org.uk](mailto:victoria.flower@kingsbridgecollege.org.uk)

## WHAT IS IT?

Developed by the **Education Endowment Foundation** and **Research Schools Network**, this programme draws upon the most recent and robust evidence of impact. The programme is led by experienced senior leaders with a proven track record for closing the attainment gap of Pupil Premium children and experts in the field of evidence-based education.

Over three full-day workshops, participants will develop, implement and sustain a high impact Pupil Premium strategy and framework to suit their own school context.

## WHO IS IT FOR?

The programme is aimed at Headteachers, Pupil Premium Coordinators and Leaders with responsibility for the learning, progress and outcomes of Disadvantaged Pupils

## WHAT ARE THE OUTCOMES?

- Quality Assured framework for Pupil Premium Coordinators
- Honest, robust and objective assessment of Pupil Premium spend
- Strategies to evaluate the impact of a Pupil Premium strategy effectively
- An evidence-based Pupil Premium Strategy for your school

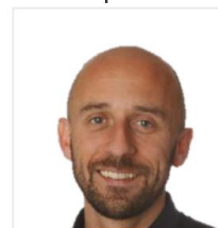
## PROGRAMME LEAD



MARC ROWLAND

Former Director of Policy and Research for the National Education Trust from 2007 to 2017, Marc is a published author on the Pupil Premium and Director of the Rosendale Research School in London.

Marc works with the EEF on school-based research projects and has carried out over 300 Pupil Premium reviews in schools.



PROFESSOR JONATHAN SHARPLES



LORWYN RANDALL

