



CAPH preferred partners offer support to both CAPH and our member schools. As a not-for-profit Community Interest Company our focus is improving our services to schools, offering excellent value for money. Any funds generated go into programmes to support schools and children. Our partnerships are an important part of ensuring the sustainability of CAPH.

We work with partners who:

- ✓ **provide financial savings to schools**
- ✓ **provide an innovative alternative to existing provision**
- ✓ **provide support for the Board of CAPH CIC**
- ✓ **work with CAPH to develop workshops, events and training in the local area**
- ✓ **contribute to CAPH.**



CAPH and Babcock Education work together to provide high quality CPD opportunities for school leaders in Cornwall. Babcock has access to an extensive network of leading educational experts who can deliver content in a range of areas including systems management, mental health, assessment, behaviour.



[Wendy Newton](mailto:Wendy.Newton@babcockldp.co.uk)



07568 102728



[www.babcockldp.co.uk/](http://www.babcockldp.co.uk/)

### **CAPH member offer**

Member schools receive a 5% discount on CPD and training events.

[\*\*View forthcoming events\*\*](#)







[eleanor.devenish@bfadventure.org](mailto:eleanor.devenish@bfadventure.org)



01326 340 912



[www.bfadventure.org](http://www.bfadventure.org)

With many years experience working with young people in crisis, BF can provide a safe space to stabilise, challenge and build skills that impact on long term outcomes.



### **CAPH member offer**

CAPH member schools get a 5% discount when using BF Adventure services – Applies to standard Group activity days.

BF Adventure is running several offers, including:

1. [FREE site visits and sample activities](#) – you can [email them](#) to arrange a visit.
2. The chance to receive a [£100 activity voucher](#) by referring other schools to them: Simply [email them](#) and copy in the teacher who's interested. If they book a residential, you can choose to use the £100 against a future school booking OR a personal family booking!

# Discovery RE®

The **enquiry** approach to  
Religious Education



[office@janleveragegroup.com](mailto:office@janleveragegroup.com)



+44 (0)1202 377192



<https://discoveryschemeofwork.com/>



Discovery RE® is an enquiry approach to Religious Education for Primary Schools which consistently delivers excellent learning outcomes. Discovery RE is a set of detailed medium-term planning for ages 3-11 which considers Christianity in every year group with a choice of one other religion or worldview each year.


These choices are aligned with the Cornwall Agreed Syllabus and offer additional scope to include Buddhism, Sikhism, Humanism and more at the school's discretion. Discovery RE is also compatible with Understanding Christianity, having worked with the Church of England to see how to fit the two together for best effect for Church Schools using UC.

There is a mapping document available [here](#), showing how we believe Discovery RE can structure RE across the school, making implementing the syllabus straightforward and enabling high quality RE learning.



eSchools provides schools with a market leading learning platform (VLE), packed full of features above and beyond that of others available to schools. The platform links with eSchools' custom designed school websites.

 [hello@eschools.co.uk](mailto:hello@eschools.co.uk)

 0845 557 8070

 [www.eschools.co.uk/](http://www.eschools.co.uk/)

### **CAPH member offer**

CAPH members receive a discount on annual website costs. eSchools can also offer free audits to make sure that your website contains all statutory information.



## Parents Evening Bookings

View available times and easily confirm a parents evening schedule with a couple of clicks.





# ict4



[jjjenkin@ict4.co.uk](mailto:jjjenkin@ict4.co.uk)



01209 311344



[www.ict4.co.uk](http://www.ict4.co.uk)

## Offers for CAPH members!

- Free secure recycling collection of old ICT equipment
- Free ICT health check encompassing equipment, admin and curriculum usage, best practices including MIS, data protection and statutory requirements.
- Discount off remote backup services (excluding licenses)
- Discount off managed encryption service.

ict4 specialise in working with schools, helping staff and students to improve outcomes and make the most of their ICT in and out of the classroom





**Jigsaw**, the mindful approach to PSHE is an established and comprehensive teaching programme, that, in 36 lessons for each year, provides children with their entitlement to PSHE that really equips them for life and learning; fully teaches all the x67 statutory Relationships and Health Education outcomes (with built-in progression and assessment); offers age-appropriate Sex Education; covers all the expectations of the PSHE Association Programme of Study; and provides all the teaching resources needed as well as free updates and ongoing support for teachers.

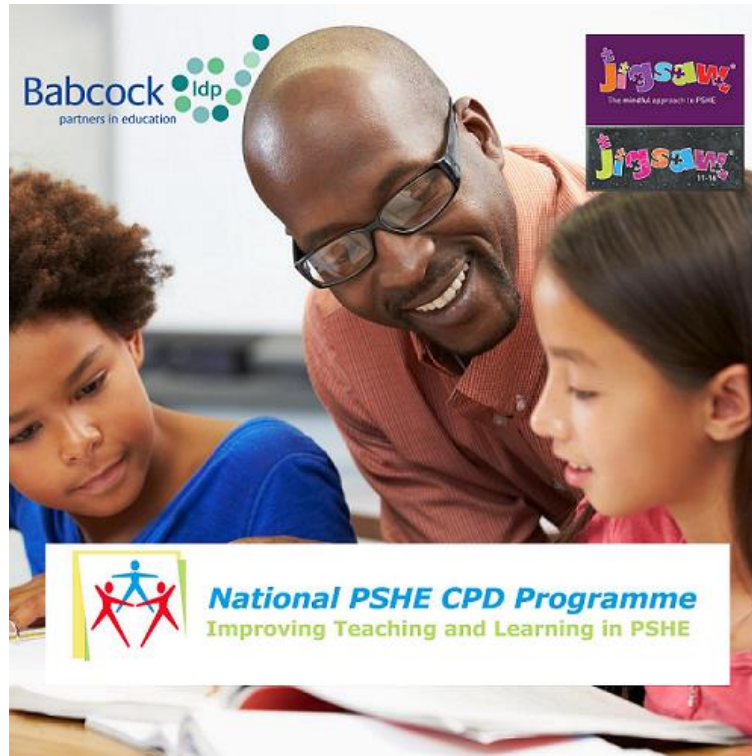
 [judy.allies@janlevergroup.com](mailto:judy.allies@janlevergroup.com)

 07835 485622

 [www.jigsawpshe.com/](http://www.jigsawpshe.com/)

### Offers for CAPH members!

- ✓ 10% discount on teaching materials available
- ✓ Free sample PSHE (including RSHE) policy available
- ✓ Free training webinars



**National PSHE CPD Programme** - this is a comprehensive, 6 virtual session, tutor led programme, which progressively builds upon the previous session, and enabling participants to apply an evidence based approach to their teaching and strategic developments. The course is delivered by Jan Lever, CEO, Jigsaw PSHE.





 [Professor Tanya Ovenden-Hope](mailto:Professor Tanya Ovenden-Hope)

 01872 303022

 [Marjon website](http://Marjon website)

## CAPH Member Offer

A 10% discount for any staff in CAPH member organisations against full fees for the MA Education and MA Education (Leadership) undertaken with Marjon University Cornwall.

CAPH schools can access university accredited CPD at preferential rates.

Marjon University Cornwall, Truro offers the following part time courses:

- [MA Education](#)
- [MA Education - Leadership](#)
- Postgraduate research degrees (PhD/MPhil)
- Accredited CPD (at degree and masters level, including school based research development)



# MILSTED LANGDON



Sonja Selby - [sselby@mlifa.co.uk](mailto:sselby@mlifa.co.uk)



07887 765 877



[Milsted Langdon Financial Planning](#)

## **CAPH Member Offer**

FREE pensions seminars run in your school for both Teachers and Support Staff - helping staff understand how their pension scheme works.

Milsted Langdon can support Head Teachers' to ensure their duty of care is met by cascading an Education & Information programme to all teaching and non-teaching staff regarding retirement benefits. They will provide free independent Financial Planning Consultations for teaching professionals/support staff and their families.

Contact Sonja Selby, Independent Financial Advisor, to find out more. Sonja is currently able to offer pensions seminars for all staff or one to one consultations via Microsoft Teams.



# myconcern

!

®

**oneteamlogic**  
The Safeguarding Company

One Team Logic are first and foremost a safeguarding company. Two of the founding directors are former Senior Police Officers with over 60 years' experience.

## CAPH member offer

One Team Logic offer a discount on an annual subscription for MyConcern, Clarity and Sentry for all CAPH members.

 [info@oneteamlogic.co.uk](mailto:info@oneteamlogic.co.uk)

 03306 600 757

 [www.myconcern.co.uk](http://www.myconcern.co.uk)

One Team Logic have transformed the recording and management of safeguarding concerns. **MyConcern is their secure and trusted, Queen's Award-winning child protection software** which is used by schools and other organisations across the UK, and globally.



**Sentry™**  
For Safer Recruitment

— NOW —  
LAUNCHED

**Single Central Record Software  
to Support and Guide Your  
Safer Recruitment Process**

The banner features a blue background with a faint image of a person's face. On the right, a laptop displays the Sentry software interface, which includes a grid of circular charts and data points. The charts are color-coded and contain numbers, likely representing different stages or metrics of the recruitment process.





CAPH has close links with the NAHT nationally and with the Cornwall branch.

### **Contacts**

Helen Collinge, Cornwall Branch Secretary

[Cornwallsw@nahtofficials.org.uk](mailto:Cornwallsw@nahtofficials.org.uk)

Ian Bruce, Pastoral Support

[arekid31@aol.com](mailto:arekid31@aol.com)

07860 146774


[@NAHTcornwall](https://www.instagram.com/NAHTcornwall)



**OXFORD**  
UNIVERSITY PRESS

As part of one of the world's greatest universities, we are committed to helping improve the lives of young people. It is why 100% of the money we make is reinvested into education and research, championing a love of learning across the world.

 [prem.hirani@oup.com](mailto:prem.hirani@oup.com)

 07786 662328

 [OUP website](http://oup.com)

## CAPH member offer

Discounts available on:

- KS3/KS4/KS5 student books and Kerboodle (digital resources)
  - KS3/KS4/KS5 Revision guides and workbooks
  - All Primary Print resources
- + termly special discounts



# REAL IDEAS

 [info@realideas.org](mailto:info@realideas.org)

 08458 621 288

 [www.realideas.org](http://www.realideas.org)

## Have you heard about the Government's new

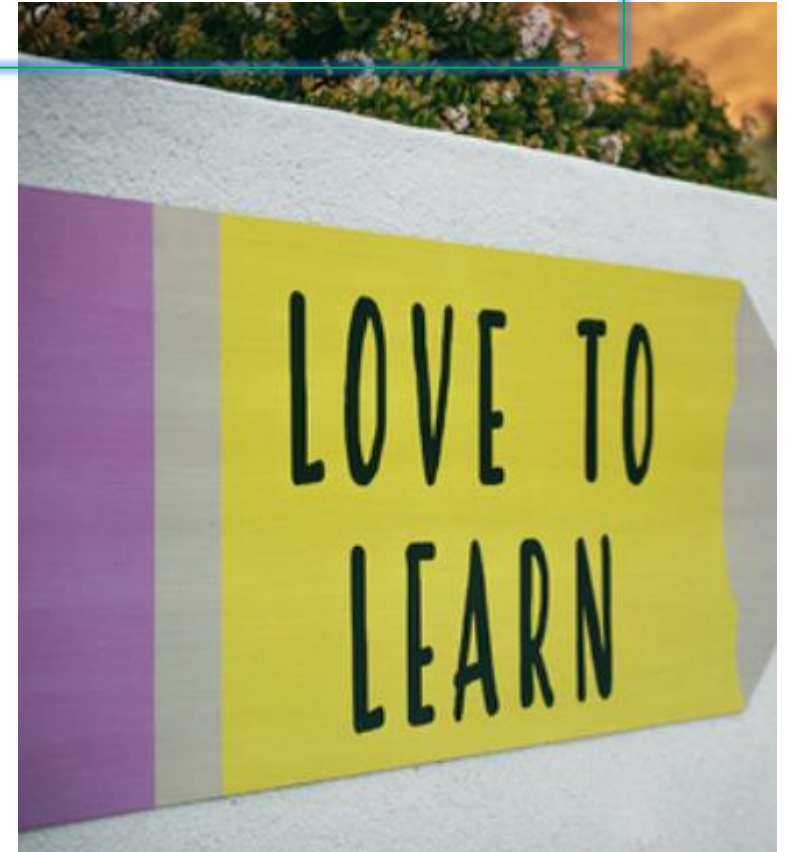
**Kickstart scheme?** The government have recently announced a new scheme to support unemployed young people called Kickstart - a way to enable businesses to offer job placements for a period of 6 months.

**Kickstart for schools:** We are developing an offer that will support schools to take on Kickstart placements in a way that ensures the process works as easily and simply as possible.

Real Ideas supports organisations all across the South West to deliver excellent cultural education for children and young people.

Real Ideas are leaders in Cultural Education. As the Arts Council Bridge Organisation for the South West of England we work with schools, youth settings and cultural organisations to connect young people with great art and culture.

Our comprehensive suite of support is offered at three levels – information and advice, training and CPD, and in-depth consultancy – all subsidised by Arts Council England. <https://bridge.realideas.org/>





20 YEARS' SERVICE



Schools Advisory Service



[sales@uk-sas.co.uk](mailto:sales@uk-sas.co.uk)



01773 814400



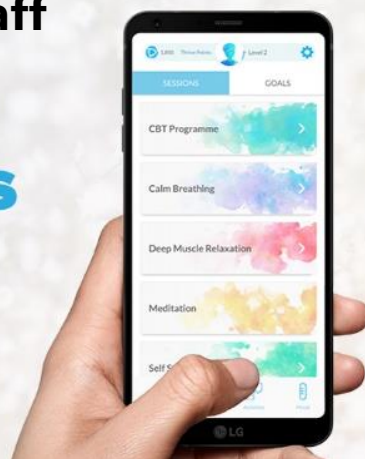
[www.schooladvice.co.uk](http://www.schooladvice.co.uk)

**Mental Health Support available for  
all Staff**

**NEW to  
SAS Policies  
Thrive App**



Schools Advisory Service



## Whole School Wellbeing & Staff Absence Insurance

### Four Distinct Policy Options

- **Schools Advisory Service** – the most comprehensive staff absence insurance, including whole school wellbeing
- **Absence Insurance Services** – our cost saving option for restrictive budgets
- **NAHT Wellness & Protect** – wellbeing support with additional support for NAHT member absences
- **Budget Overspend** – absence insurance with a lower initial outlay for schools



Crescent Purchasing Consortium



**ISBL**  
Institute of School Business Leadership

Approved Partner



Sue Plechowicz and Tracey Foster are qualified Psychologists, teachers and SENCos with a combined experience of over forty years working in education and have a profound understanding of how to support children and young people with disabilities and special educational needs, and their families. We have a wide range of knowledge of SEND provision and support in EYFS, Primary and Secondary settings, as well as the SEN Code of Practice.



[senservicessw@gmail.com](mailto:senservicessw@gmail.com)



07913 179125 or 07854110297



<http://www.senservices.co.uk>

### **CAPH member offer**

5% discount on all service costs

### **Spring & Summer term 2021 training:**

- **Understanding and Supporting Learners with Attachment Disorder**
- **Understanding and Supporting Learners with Autism**
- **Meeting SEND Statutory Requirements and Preparing for OfSTED**
- **Understanding and Supporting Pupils with ADHD**
- **SEN Code of Practice Workshop**



 [supplyplus@plpcic.co.uk](mailto:supplyplus@plpcic.co.uk)

 01752 784436

 [Information for Schools](#)

Supply+ is a unique Teacher Supply & Recruitment Service. We offer regular supply work with fair rates of pay for teachers and reasonable costs for schools.

A collaboration between the Cornwall & Plymouth Primary Heads Associations, our prime motivation is to improve the life chances for all our children. Both are Community Interest Companies serving our member schools.

Supply+ stands apart from other supply agencies and aims to deliver the highest standard of supply teachers with **teaching quality as the key focus**. We are continually striving to improve the quality of the staff we place and welcome direct feedback and advice from our local Headteachers.







[info@tmscornwall.co.uk](mailto:info@tmscornwall.co.uk)



01872 510240, 07970 047478



<https://www.tmscornwall.co.uk/>



### **CAPH member offer**

CAPH schools receive a 5% discount on new grounds maintenance contracts.

Team Maintenance Services Ltd operates a well-established specialist service from the heart of Cornwall encompassing all aspects of external grounds maintenance and landscaping.

### **Key points for schools:**

- ✓ Staff are all uniformed, DBS checked and carry identification
- ✓ Trained staff
- ✓ Certified to apply chemicals
- ✓ Annual grounds maintenance schedule
- ✓ Excellent health and safety record
- ✓ Accreditation with Safe Contractor and Contractor Plus
- ✓ We will help you make the most of your outdoor classroom





[James Twine](#) and [Victoria Sargeant](#)



01752 292351



[Wolferstans website](#)



Wolferstans are education law specialists providing a complete service for local schools. The services we offer include; ongoing human resources/employment law support, education law, SEND Tribunals, Employment Tribunals, Academy conversions and MAT mergers/expansion projects in addition to expertise and experience of handling complaints to the ICO and Subject Access Requests.

### **CAPH member offer**

Wolferstans offer free termly legal & employment seminars for CAPH member schools. CAPH schools also receive a discount on all quotations.

Wolferstans also provide legal support to CAPH CIC.



[Oliver Wright](#), Area Sales Manager

07540 670275

[www.ypo.co.uk](http://www.ypo.co.uk)

**YPO supplies products and services to a wide range of customers including schools, local authorities, charities, emergency services, public sector and other businesses such as nurseries and care homes.**

We're 100% publicly owned, by 13 local authorities, which means the profits we make are returned to our public sector customers, delivering even better value for money.

Our range includes around **30,000 products and 100 frameworks**; so whether it's pens and paper, computers, furniture, or even things like food and insurance, we can help you get the best deals around.



### **CAPH member offer**

As we can combine your demands with our other customers, we can negotiate a better deal for you than if you tried on your own.





[www.zenergi.co.uk](http://www.zenergi.co.uk)

## Energy designed around you

We have a wealth of knowledge with the utilities industry and our aim is getting the best value for **you** with a strong focus on customer service. We understand the frustrations of School Business Leaders and you'll be comforted to know that our competitive pricing is procured through an OJEU compliant framework.

We'll remove the stress of procurement, getting the most cost-effective utility pricing, and help you balance your budgets, manage your bills, invoicing, contracts and suppliers along with our range of technical services.

## Meet your local energy expert Michelle Villiers

### Specialities:

- Energy procurement
- Energy compliance
- Energy performance



POSITIVE + ENERGY

"Contact me to discuss your energy needs. It won't cost you anything and could see some great savings!"

Michelle



e: [michelle@zenergi.co.uk](mailto:michelle@zenergi.co.uk)

t: 07940 732933

**zenergi**