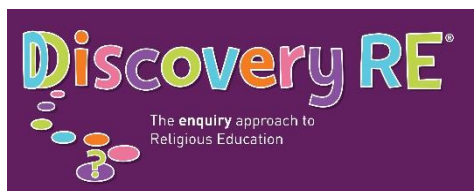




zenergi

YPO®



OPUS

ICT4



MILSTED LANGDON



CAPH preferred partners offer support to both CAPH and our member schools. As a not-for-profit Community Interest Company our focus is improving our services to schools, offering excellent value for money. Any funds generated go into programmes to support schools and children. Our partnerships are an important part of ensuring the sustainability of CAPH.

We work with partners who:

- ✓ **provide financial savings to schools**
- ✓ **provide an innovative alternative to existing provision**
- ✓ **provide support for the Board of CAPH CIC**
- ✓ **work with CAPH to develop workshops, events and training in the local area**
- ✓ **contribute to CAPH.**



CAPH and Babcock Education work together to provide high quality CPD opportunities for school leaders in Cornwall. Babcock has access to an extensive network of leading educational experts who can deliver content in a range of areas including systems management, mental health, assessment, behaviour.



[Wendy Newton](mailto:Wendy Newton)



07568 102728



[www.babcockldp.co.uk/](http://www.babcockldp.co.uk/)

### **CAPH member offer**

Member schools receive a 5% discount on CPD and training events.

[\*\*View forthcoming events\*\*](#)





[eleanor.devenish@bfadventure.org](mailto:eleanor.devenish@bfadventure.org)



01326 340 912



[www.bfadventure.org](http://www.bfadventure.org)

With many years experience working with young people in crisis, BF can provide a safe space to stabilise, challenge and build skills that impact on long term outcomes.



### **CAPH member offer**

CAPH member schools get a 5% discount when using BF Adventure services – Applies to standard Group activity days.

BF Adventure is running several offers, including:

1. [FREE site visits and sample activities](#) – you can [email them](#) to arrange a visit.
2. The chance to receive a [£100 activity voucher](#) by referring other schools to them: Simply [email them](#) and copy in the teacher who's interested. If they book a residential, you can choose to use the £100 against a future school booking OR a personal family booking!



[treandpet@dandelionlearning.co.uk](mailto:treandpet@dandelionlearning.co.uk)



07792 349188 (Tre); 07779 337450 (Pet)

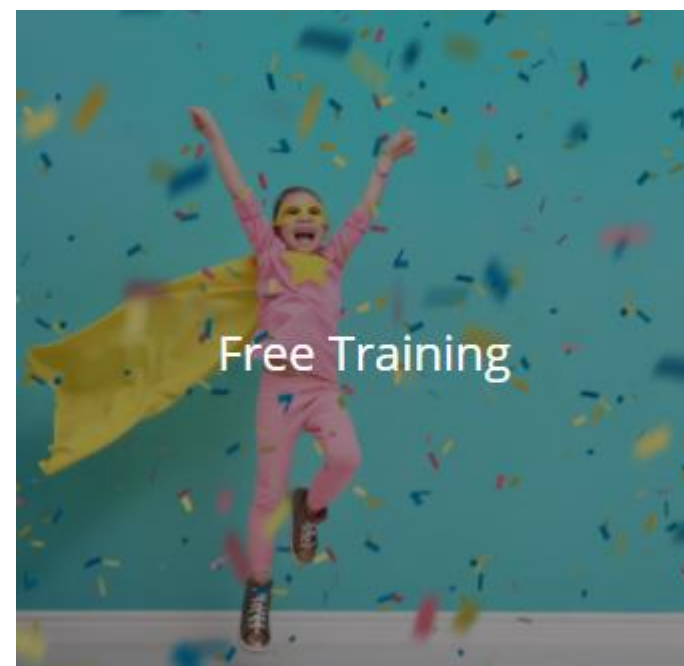


[www.dandelionlearning.co.uk/](http://www.dandelionlearning.co.uk/)



## Inspirational Primary English Training for Schools

- ✓ Help to audit provision providing a clear, focused plan
- ✓ Inspirational training using proven techniques to ensure all pupils succeed
- ✓ Bespoke training for you (through INSET, twilights, leadership and English planning support)
- ✓ Ongoing support to ensure lasting impact on pupil progress.



# Discovery RE®

The **enquiry** approach to  
Religious Education



[office@janleveragegroup.com](mailto:office@janleveragegroup.com)



+44 (0)1202 377192



<https://discoveryschemeofwork.com/>



Discovery RE® is an enquiry approach to Religious Education for Primary Schools which consistently delivers excellent learning outcomes. Discovery RE is a set of detailed medium-term planning for ages 3-11 which considers Christianity in every year group with a choice of one other religion or worldview each year.

These choices are aligned with the [Cornwall Agreed Syllabus](#) and offer additional scope to include Buddhism, Sikhism, Humanism and more at the school's discretion. Discovery RE is also compatible with Understanding Christianity, having worked with the Church of England to see how to fit the two together for best effect for Church Schools using UC.

Free workshop 21<sup>st</sup> October:  
[Making RE fun and relevant in  
the primary classroom.](#)



eSchools provides schools with a market leading learning platform (VLE), packed full of features above and beyond that of others available to schools. The platform links with eSchools' custom designed school websites.

 [hello@eschools.co.uk](mailto:hello@eschools.co.uk)

 0845 557 8070

 [www.eschools.co.uk/](http://www.eschools.co.uk/)

**[View current CAPH members offers!](#)**

**Including reduced website redesign costs & free website check**



## Parents Evening Bookings

View available times and easily confirm a parents evening schedule with a couple of clicks.



# ict4



[jjenkin@ict4.co.uk](mailto:jjenkin@ict4.co.uk)



01209 311344



[www.ict4.co.uk](http://www.ict4.co.uk)

## Offers for CAPH members!

- Free secure recycling collection of old ICT equipment
- Free ICT health check encompassing equipment, admin and curriculum usage, best practices including MIS, data protection and statutory requirements.
- Discount off remote backup services (excluding licenses)
- Discount off managed encryption service.

At iCT4 we specialise in IT solutions for education. We manage the technology for schools so teachers can focus on what they do best.





 [judy.allies@janleveragegroup.com](mailto:judy.allies@janleveragegroup.com)

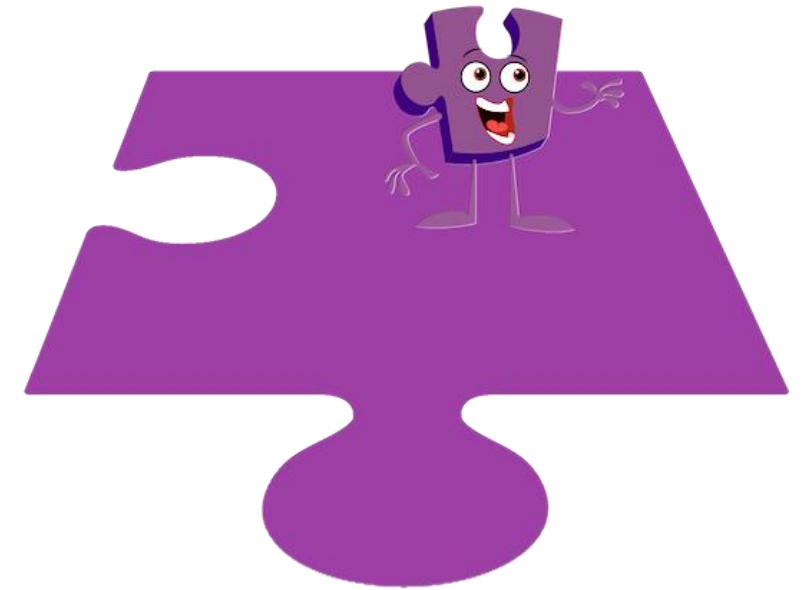
 07835 485622

 [www.jigsawpshe.com/](http://www.jigsawpshe.com/)

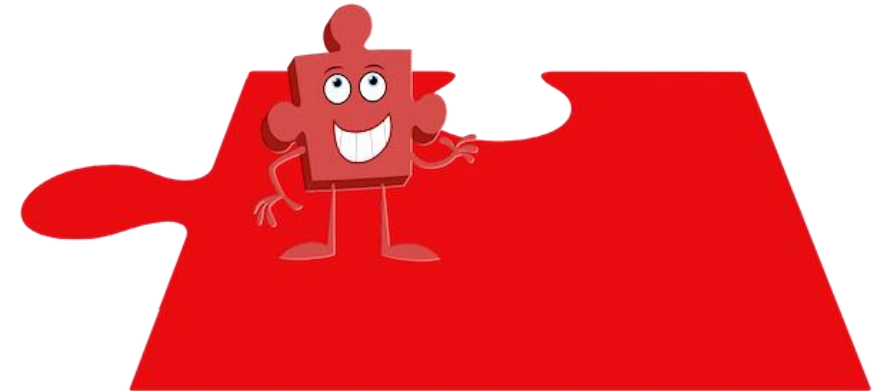
### Offers for CAPH members!

- ✓ 10% discount on teaching materials available
- ✓ Free sample PSHE (including RSHE) policy available
- ✓ Free training webinars

**Jigsaw**, the mindful approach to PSHE, is an established and comprehensive teaching programme, that, in 36 lessons for each year, provides children with their entitlement to PSHE that really equips them for life and learning; fully teaches all the x67 statutory Relationships and Health Education outcomes (with built-in progression and assessment); offers age-appropriate Sex Education; covers all the expectations of the PSHE Association Programme of Study; and provides all the teaching resources needed as well as free updates and ongoing support for teachers.



Free workshop 22<sup>nd</sup> October:  
**[Increasing staff confidence to deliver effective RSHE lessons](#)**





 [Professor Tanya Ovenden-Hope](mailto:Professor Tanya Ovenden-Hope)

 01872 303022

 [Marjon website](http://Marjon website)

## CAPH Member Offer

A 10% discount for any staff in CAPH member organisations against full fees for the MA Education and MA Education (Leadership) undertaken with Marjon University Cornwall.

CAPH schools can access university accredited CPD at preferential rates.

Marjon University Cornwall, Truro offers the following part time courses:

- [MA Education](#)
- [MA Education - Leadership](#)
- Postgraduate research degrees (PhD/MPhil)
- Accredited CPD (at degree and masters level, including school based research development)



# MILSTED LANGDON

✉ Sonja Selby - [sselby@mlifa.co.uk](mailto:sselby@mlifa.co.uk)

☎ 07887 765 877

🌐 [Milsted Langdon Financial Planning](#)

## **CAPH Member Offer**

FREE pensions seminars run in your school for both Teachers and Support Staff - helping staff understand how their pension scheme works.

Milsted Langdon can support Head Teachers' to ensure their duty of care is met by cascading an Education & Information programme to all teaching and non-teaching staff regarding retirement benefits. They will provide free independent Financial Planning Consultations for teaching professionals/support staff and their families.

Contact Sonja Selby, Independent Financial Advisor, to find out more. Sonja is currently able to offer pensions seminars for all staff or one to one consultations via Microsoft Teams.





# THE SAFEGUARDING COMPANY

**myconcern**



The Safeguarding Company products include MyConcern, a secure system for recording and managing all levels of safeguarding and pastoral concern. Sentry, an SCR solution that supports the safer recruitment process and Clarity, a multi-establishment solution that gives high-level reporting at group level.

The Safeguarding Company provides the only truly 360° approach to safeguarding available today through our range of solutions that prevent, reduce and eliminate abuse, harm, and neglect.

## CAPH member offer

The Safeguarding Company offer a discount on an annual subscription for MyConcern, Clarity and Sentry for all CAPH members.



[info@myconcern.co.uk](mailto:info@myconcern.co.uk)



03306 600 757



[www.thesafeguardingcompany.com//](http://www.thesafeguardingcompany.com//)

**Sentry™**  
For Safer Recruitment

— NOW —  
LAUNCHED

**Single Central Record Software  
to Support and Guide Your  
Safer Recruitment Process**



**Opus Training** - offering a range of school support services from pre-OFSTED health checks to behaviour management training to teacher mentoring, and everything in between

20 YEARS' SERVICE



Schools Advisory Service



[sales@uk-sas.co.uk](mailto:sales@uk-sas.co.uk); [HannahD@uk-sas.co.uk](mailto:HannahD@uk-sas.co.uk)



01773 814400



[www.schooladvice.co.uk](http://www.schooladvice.co.uk)

## Whole School Wellbeing & Staff Absence Insurance

### Distinct Policy Options

- **Schools Advisory Service** – the most comprehensive staff absence insurance, including whole school wellbeing
- **Absence Insurance Services** – our cost saving option for restrictive budgets
- **NAHT Wellness & Protect** – wellbeing support with additional support for NAHT member absences
- **Budget Overspend** – absence insurance with a lower initial outlay for schools



"Our staff love the SAS policy, the staff room is full of 'SAS helped me with this' and 'SAS helped me with that'. Best thing we have done."

Feedback from school about SAS Wellbeing Services





Sue Plechowicz and Tracey Foster are qualified Psychologists, teachers and SENCos with a combined experience of over forty years working in education and have a profound understanding of how to support children and young people with disabilities and special educational needs, and their families. We have a wide range of knowledge of SEND provision and support in EYFS, Primary and Secondary settings, as well as the SEN Code of Practice.



[senservicessw@gmail.com](mailto:senservicessw@gmail.com)



07913 179125 or 07854110297



<http://www.senservices.co.uk>

### **CAPH member offer**

5% discount on all service costs

### **Autumn 2021 training available:**

- **Planning your year as SENCO**
- **Enabling learners with SEND to make practice with writing**
- **Understanding & supporting children whose behaviour is challenging**
- **Understanding & supporting sensory needs in a mainstream setting**



[info@tmscornwall.co.uk](mailto:info@tmscornwall.co.uk)



01872 510240, 07970 047478



<https://www.tmscornwall.co.uk/>



### **CAPH member offer**

CAPH schools receive a 5% discount on new grounds maintenance contracts.

Team Maintenance Services Ltd operates a well-established specialist service from the heart of Cornwall encompassing all aspects of external grounds maintenance and landscaping.

### **Key points for schools:**

- ✓ Staff are all uniformed, DBS checked and carry identification
- ✓ Trained staff
- ✓ Certified to apply chemicals
- ✓ Annual grounds maintenance schedule
- ✓ Excellent health and safety record
- ✓ Accreditation with Safe Contractor and Contractor Plus
- ✓ We will help you make the most of your outdoor classroom





[James Twine](#) and [Victoria Sargeant](#)



01752 292351



[Wolferstans website](#)



Wolferstans are education law specialists providing a complete service for local schools. The services we offer include; ongoing human resources/employment law support, education law, SEND Tribunals, Employment Tribunals, Academy conversions and MAT mergers/expansion projects in addition to expertise and experience of handling complaints to the ICO and Subject Access Requests.

### **CAPH member offer**

Wolferstans offer free termly legal & employment seminars for CAPH member schools. CAPH schools also receive a discount on all quotations.

Wolferstans also provide legal support to CAPH CIC.



[Oliver Wright](#), Area Sales Manager

07540 670275

[www.ypo.co.uk](http://www.ypo.co.uk)

**YPO supplies products and services to a wide range of customers including schools, local authorities, charities, emergency services, public sector and other businesses such as nurseries and care homes.**

We're 100% publicly owned, by 13 local authorities, which means the profits we make are returned to our public sector customers, delivering even better value for money.

Our range includes around **30,000 products and 100 frameworks**; so whether it's pens and paper, computers, furniture, or even things like food and insurance, we can help you get the best deals around.



### **CAPH member offer**

As we can combine your demands with our other customers, we can negotiate a better deal for you than if you tried on your own.



[www.zenergi.co.uk](http://www.zenergi.co.uk)

## Energy designed around you

We have a wealth of knowledge with the utilities industry and our aim is getting the best value for **you** with a strong focus on customer service. We understand the frustrations of School Business Leaders and you'll be comforted to know that our competitive pricing is procured through an OJEU compliant framework.

We'll remove the stress of procurement, getting the most cost-effective utility pricing, and help you balance your budgets, manage your bills, invoicing, contracts and suppliers along with our range of technical services.

Meet your local energy expert  
**Michelle Villiers**

### Specialities:

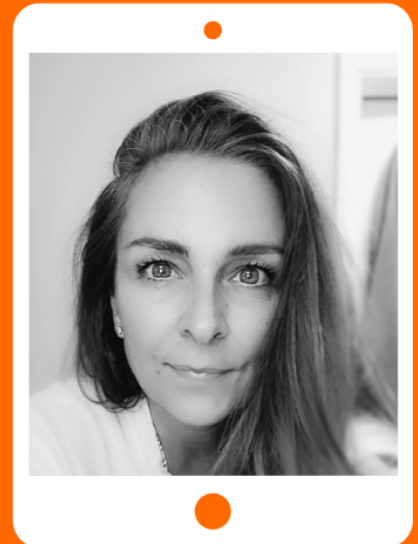
- Energy procurement
- Energy compliance
- Energy performance



POSITIVE + ENERGY

"Contact me to discuss your energy needs. It won't cost you anything and could see some great savings!"

**Michelle**



e: [michelle@zenergi.co.uk](mailto:michelle@zenergi.co.uk)

t: 07940 732933

**zenergi**

## CAPH Strategic Partners



The Teaching School Hub Partnership for Cornwall & the Isles of Scilly. One Cornwall provides provision for:

- Initial Teacher Training
- Early Career Framework
- Appropriate Body services
- Reformed NPQs
- CPD

CAPH has close links with the NAHT nationally and with the Cornwall branch.



Helen Collinge,  
Cornwall Branch Secretary  
[Cornwallsw@nahtofficials.org.uk](mailto:Cornwallsw@nahtofficials.org.uk)

Ian Bruce, Pastoral Support  
[arekid31@aol.com](mailto:arekid31@aol.com)  
07860 146774



From supporting young people to find work and develop skills to helping start-ups and enterprises thrive, Real Ideas work to solve problems and create positive and lasting social change.

## Cornwall Music Education Hub

The Cornwall Music Education Hub is a partnership of both local and national arts and music organisations working together to support the music education of young people in Cornwall.